

A modern kitchen with white cabinetry, a central island, a refrigerator, and an oven. The kitchen features a clean, minimalist design with a white countertop and a central island. The background shows a refrigerator, an oven, and a sink area with various kitchen items.

RARARTA CABINETS

Kitchen & Bath
Measurement Form

www.rarartacabinets.com
service@rarartacabinets.com

CUSTOMER INFORMATION

Name:

Date:

Order Timeline (please circle)

1-2 WEEKS

2-4 WEEKS

1 MONTH+

3 MONTHS+

Address:

City:

State:

Zip Code:

(required for shipping quote)

Primary Phone:

Primary Email:

Cabinet Style(s):

Additional Information:

MEASURING YOUR KITCHEN

Please use the attached graph paper & measurement charts to mark down your dimensions. Double check your work. These measurements must be 100% correct for your new cabinetry to fit perfectly.

<p>Room</p> <ul style="list-style-type: none">• Measure the room wall-to-wall.• Measure from the floor to ceiling.• Measure all walls even if you do not plan to put cabinets on them as this is important for us to present you with a proper design.	<p>Walls</p> <ul style="list-style-type: none">• Make a rough drawing of the shape of the room showing any walls, doors, windows, protrusions or recessed areas.• Measure each wall section and record the dimensions on the drawing. A wall section is from one corner to a doorway or window.
<p>Doors</p> <ul style="list-style-type: none">• Measure each door/path and record the width.• Please indicate on your sketch if a door swings in or out of the room and which side the hinge is on	<p>Windows/ Walls</p> <ul style="list-style-type: none">• Measure the height from the floor to the bottom of your windows and mark it down.• Measure the height from the top of the window to the ceiling and mark it down.
<p>Windows</p> <ul style="list-style-type: none">• Height - Measure from top to bottom• Width - measure across window, from right to left.• Windows are measured from outside edge to outside edge of casing or trim.	<p>Utilities</p> <ul style="list-style-type: none">• Mark on your sketch the exact location of the sink, water & gas lines, wall switch & receptacles, and any other obstructions in the room.• Measure from the end of the wall the utility is on to the middle of the pipe/switch, etc. to note its exact location in the room.
<p>Appliances</p> <ul style="list-style-type: none">• Mark the location of where appliances will go.• Record the dimensions of each appliance - height, width, and depth.• Note: if you are putting in new appliances, make sure to have the height, width, and depths of any new stoves, dishwashers, and refrigerators ready at the time of design. If you will be getting new services such as a water line for an icemaker, or under cabinet outlets for water filters, wine keepers, or garbage disposal, please indicate that as well.	

You Will Need:



Tape Measure

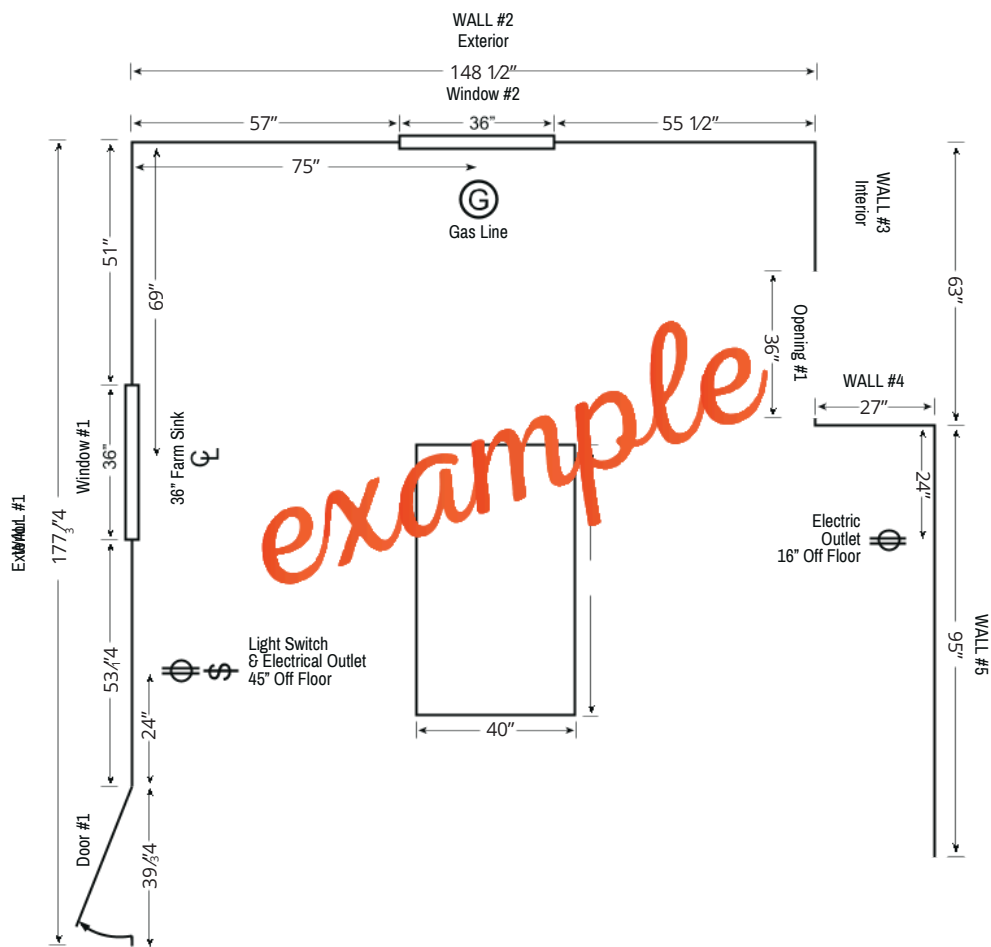


Pen/Pencil



This Measuring Guide

Please use the example below for your reference while creating the floor plan of your space.



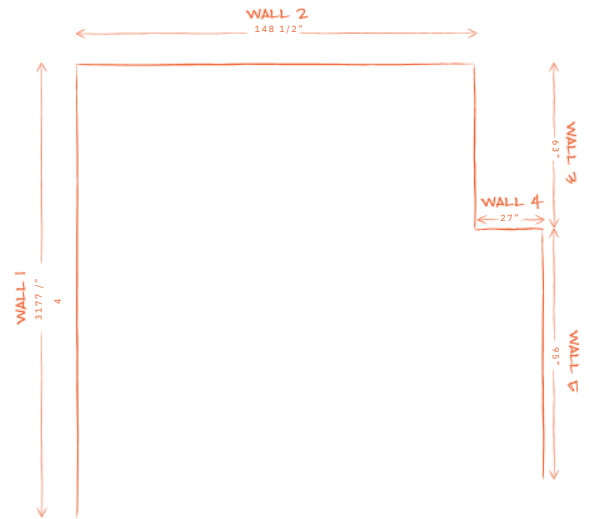
Utility/Mechanical Legend: Use these symbols on your floor plan.

- Center Line
- Light Switch
- 220V (Electric Stove)
- Outlet
- Gas

Step 1: Measure Your Space

- Starting in the left corner, measure each wall in the space that will contain cabinets and record those measurements (in inches) on the "Floor Plan Design Grid" located on the last page of this Measuring Guide.
- Number each wall on the floor plan.

Note: Be sure to measure the full length of each wall.



Step 2: Doors, Windows, Room Openings

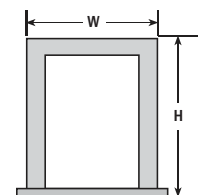
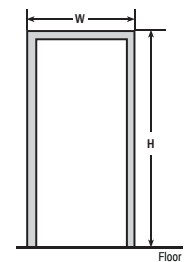
- Locate and measure doors, windows and room openings.
- Record and Number each door, window and room opening on the grid.
- Record the corresponding dimensions in the measurement charts below.

Note: When measuring doors, windows and room openings include the trim/casing in the dimensions.

Windows /Door/Opening Measurements

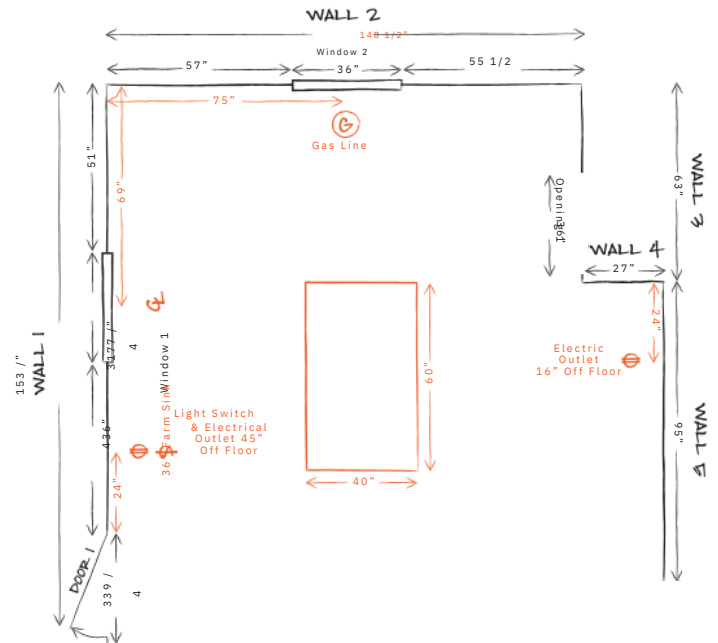
*Label on Floorplan using the corresponding numbers below

Opening or Door or Window	Width	Height	Notes:



Step 3: Obstacles

- Locate and measure obstacles such as electrical outlets, vents, pipes, radiators, etc
- Record any islands you already have or wish to add.
- Record and Number each obstacle on the grid.



Step 4: Appliances

Common appliances typically come in standard sizes but it is important that we have the measurements. Luxury appliances such as cooktops, range hoods, warming drawers, and wine chillers have dimensions that can vary drastically.

Note: Send us manufacturer specification sheets, and installation guides if possible.

Range Brand/Model	Width	Depth	Height
Microwave Brand/Model	Width	Depth	Height
Refrigerator Brand/Model	Width	Depth	Height
Dishwasher Brand/Model	Width	Depth	Height
Cook-Top Brand/Model	Width	Depth	Height
Oven Brand/Model	Width	Depth	Height
Hood Brand/Model	Width	Depth	Height
Other Brand/Model	Width	Depth	Height

Step 5: Ceiling Height

Accurate ceiling height measurements are very important when determining which wall cabinets and crown moulding you want in your new kitchen. It is very important to take several measurements as the height can vary in different spots in the room. Many older homes have soffits above their wall cabinets that need to be taken into consideration when creating your design.

Note: Measure height in 3 areas and record the shortest dimension.

A = Ceiling Height

Ceiling Height: _____

Soffits (the area between the top of the wall cabinet and the ceiling).

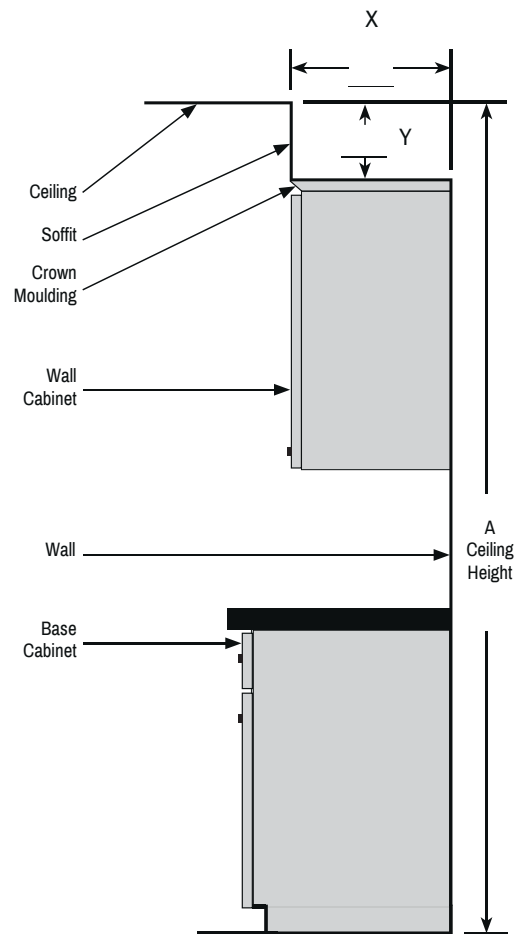
Does the room have soffits?

If yes, please mark the diagram to the right.

Yes No

Do you plan to keep the existing soffits?

Yes No



Please check any additional items you are interested in adding:

- | | | | |
|---|---|--|---|
| <input type="checkbox"/> Base Molding | <input type="checkbox"/> Garbage Pull Out Cabinet | <input type="checkbox"/> Microwave Upper Cabinet | <input type="checkbox"/> Soft Close Doors |
| <input type="checkbox"/> Crown Molding | <input type="checkbox"/> Glass Doors | <input type="checkbox"/> Open Shelves | <input type="checkbox"/> Wide Storage Drawers |
| <input type="checkbox"/> Crown Molding on the Ceiling | <input type="checkbox"/> Lazy Susan | <input type="checkbox"/> Plate Rack | <input type="checkbox"/> Wine Storage |
| <input type="checkbox"/> Cutlery Divider | <input type="checkbox"/> Light Rail Molding | <input type="checkbox"/> Roll Out Trays | <input type="checkbox"/> Wood Hood |
| <input type="checkbox"/> Decorative Door Panels | <input type="checkbox"/> Microwave Base Cabinet | <input type="checkbox"/> Spice Pull Out Cabinet | |

Step 6: Photos & Submit

Now that you have completed the measuring guide, it is time to take some photos of your current space. Make sure to include pictures of each wall that will contain cabinets. Include photos of any special obstacles that you may have found difficult to include in your drawing. Thank you for completing your measuring guide. A member of our design team will be in touch with you within 24 hours and will have your drawings and quote done within 48 hours.

Floor Plan Design Grid

Use the grid below to draw the floor plan (aerial view) of your space. Follow each step of the guide to complete the drawing.

Note: Each small square is 3" x 3" and each large square is 12" x 12".

	1'	2'	3'	4'	5'	6'	7'	8'	9'	10'	11'	12'	13'	14'	15'
Start															
1'															
2'															
3'															
4'															
5'															
6'															
7'															
8'															
9'															
10'															
11'															
12'															
13'															
14'															
15'															